



IMPACT AND BENEFITS OF WATER STEWARDSHIP PARTNERSHIPS

Collective action in flower farming
Lake Naivasha, Kenya

Mbogo Kamau, CEO - Imarisha Naivasha

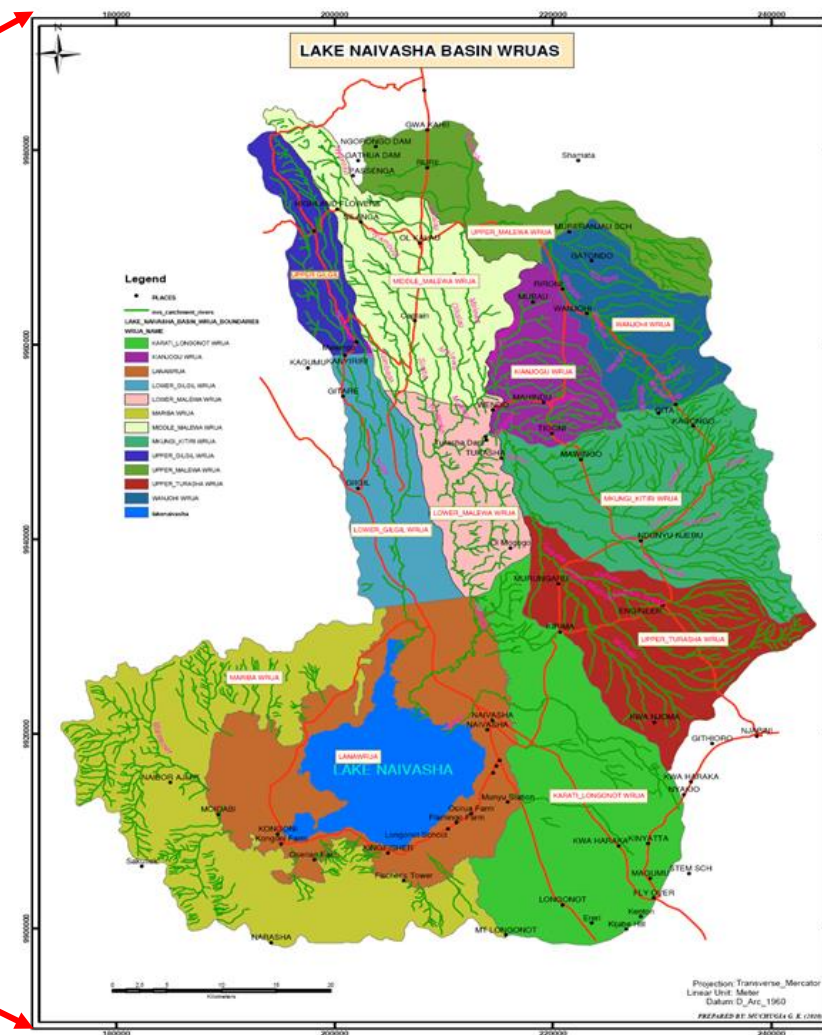
27th October 2015, Johannesburg



The Lake Naivasha Basin & Imarisha



Imarisha Naivasha



The Lake Naivasha Basin & Imarisha



Sainsbury's

TESCO

giz Deutsche Gesellschaft
für Internationale
Zusammenarbeit (GIZ) GmbH



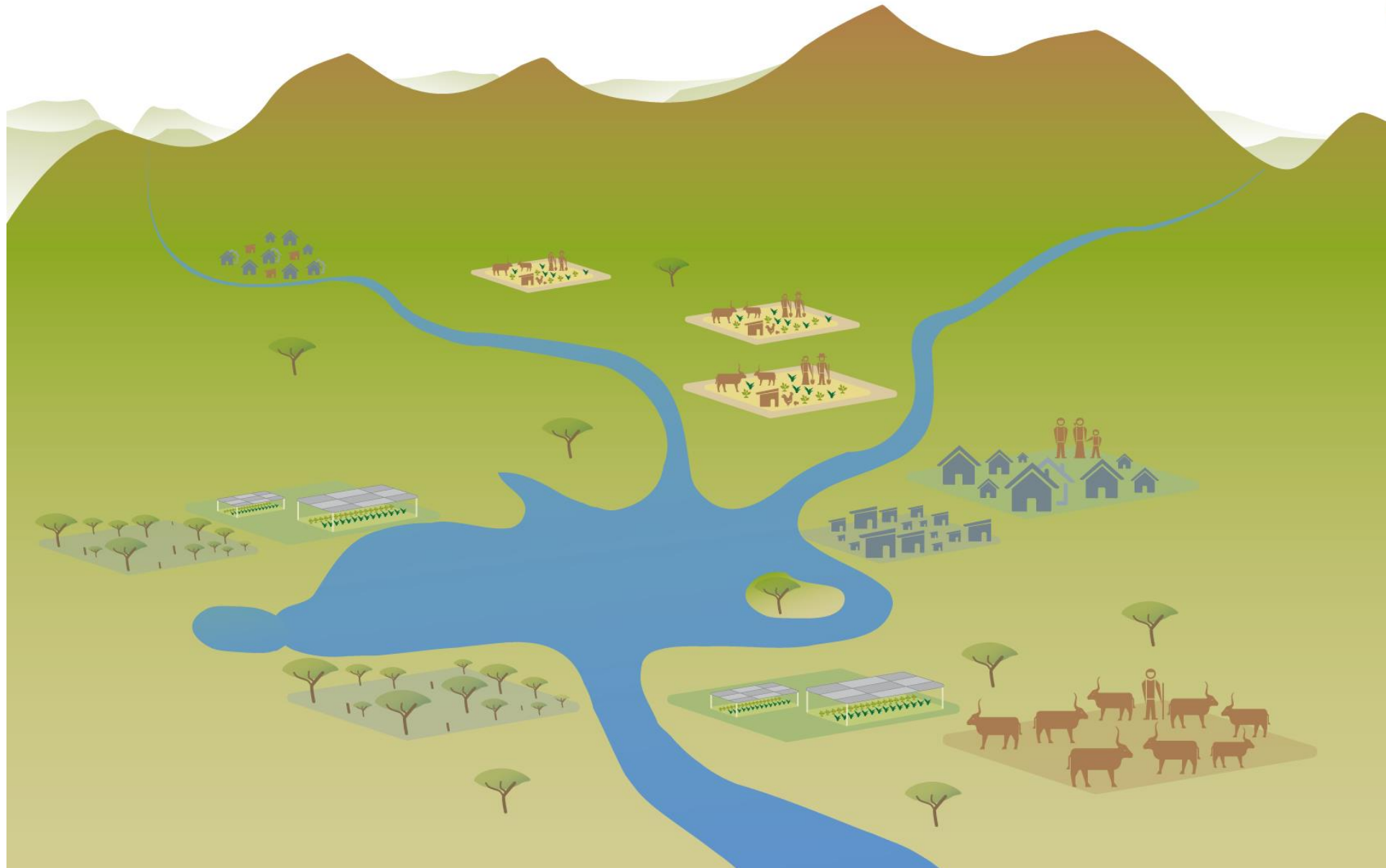
WIN Water
Integrity
Network



ASDA
part of the WAL-MART family



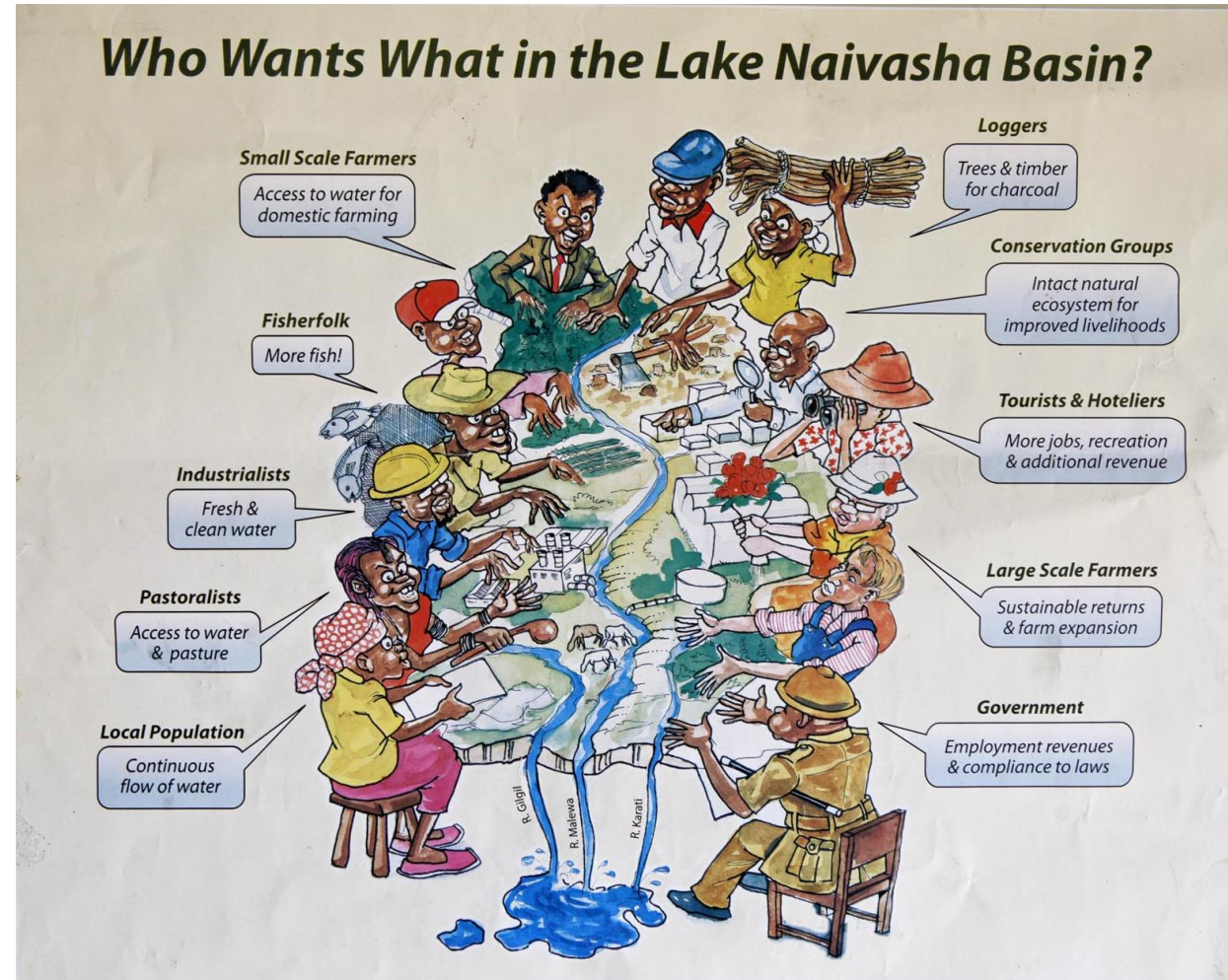
The Lake: challenges and shared water risks



The Lake: challenges and shared water risks



Stakeholders perceptions





Success factors partnerships

- Regular meetings
- Sharing of resources
- Supportive policy environment i.e Water Act 2002
- Structure / status of Imarisha Naivasha not purely GoK but PPP programme
- Learning environment with pro-active and open partners
- Contribution of all parties
- Make sure partners complement each other
- Practical solutions achieved

Partnership Challenges



Coordination: who does what?



Ownership and sustainability



Harmonization of approaches

- Data availability, dissemination and exchange
- Commitment of Government and other Institutions
- Parties on non speaking terms in beginning



Way forward and next steps

- Set-up of water funds
- Water Risks and Opportunities Assessment (WROA)
- More involvement and commitment:
 - local private sector
 - Government of Kenya
 - county govts.
 - development partners
- Continue with concrete investments - capacity building and infrastructure development



2015