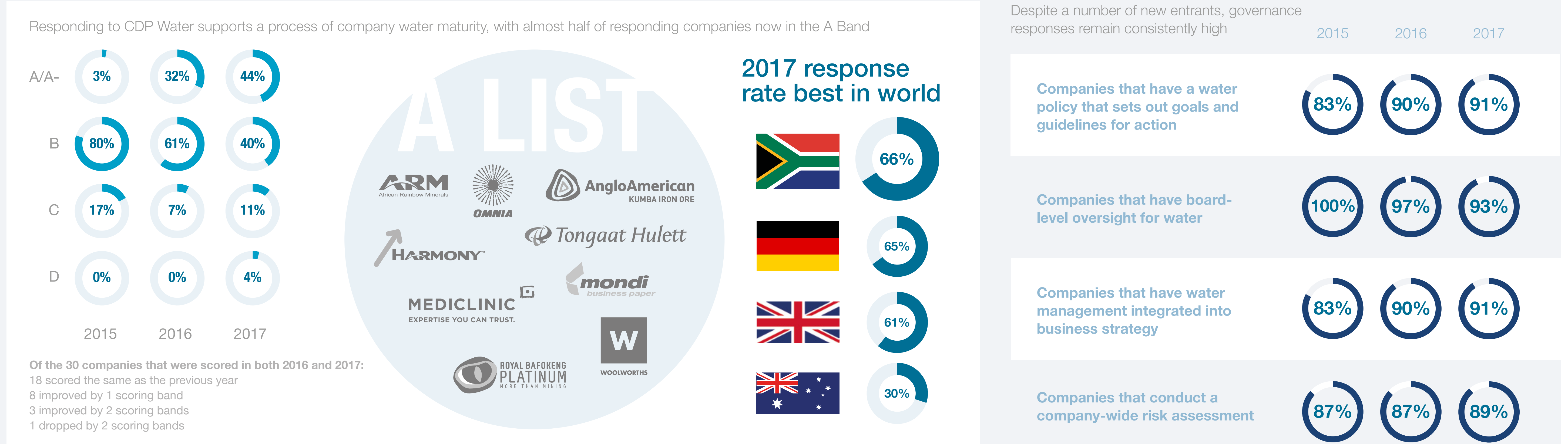


Key Messages

Set against a backdrop of significant water impacts, responding company performance remains strong
However, company responses need to ramp up to match the scale of risk facing business

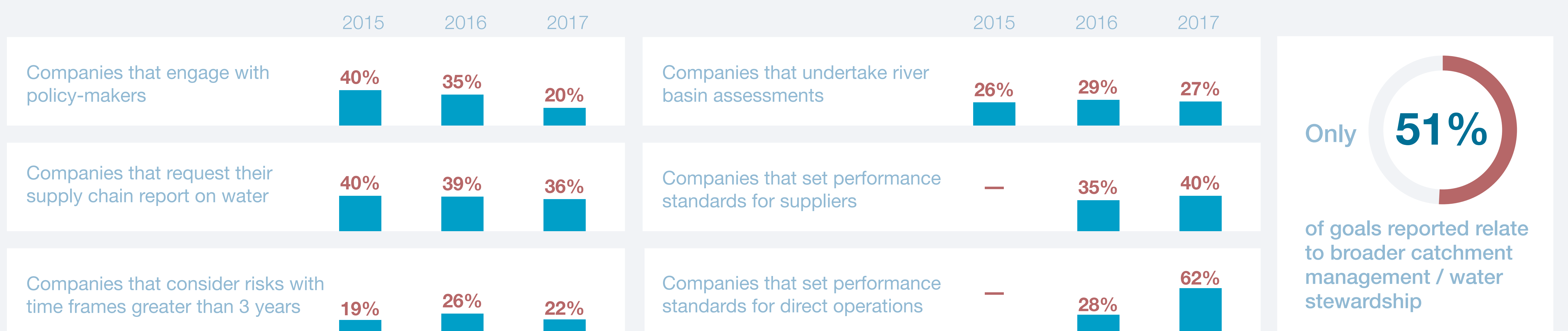
In addition to the number of A list companies doubling each year since 2015, the response rate has increased considerably



The national water risk environment demands a systemic response

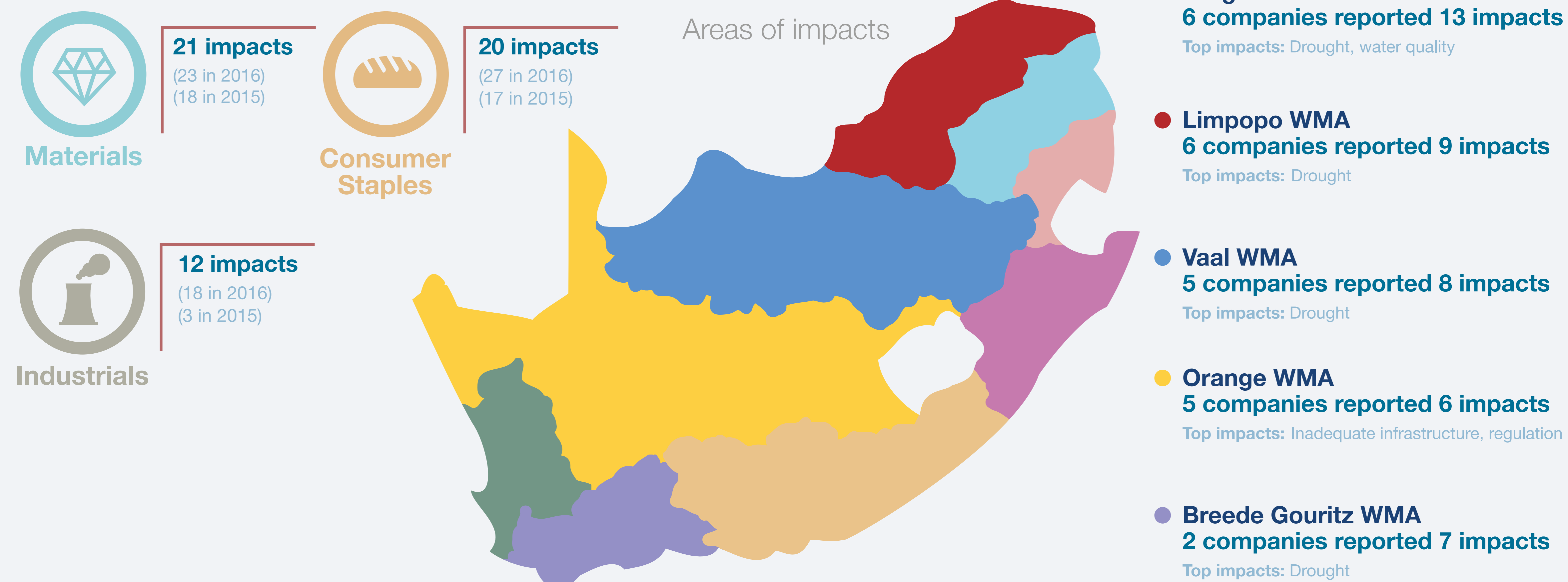


But the data suggests that we are not responding systemically



Three sectors continue to report the most impacts, with multiple Water Management Areas (WMAs) experiencing detrimental impacts

The materials sector reported the most impacts



While company operational measures are important, the resolution of drought and weather extremes ultimately resides in a combination of catchment level action, improved water governance and effective infrastructure.

* Illustrates percentage of responding companies