

Introducing the uMhlathuze Water Stewardship Partnership

March 2020



UWASP

uMhlathuze Water Stewardship Partnership





The partnership was catalysed by a major drought in 2016, and the need for a collective response



The major dam serving the uMhlathuze region at 18% capacity in 2016:



Photo Credit: Alex McNamara, NBI
Goudertrouw Dam, August 2016

UWASP

uMhlathuze Water Stewardship Partnership

A partnership between:



**Pongola-Umzimkulu
Proto-CMA**



uwasp.org.za

The partnership aims to:



1. Serve as a **coordination** hub for collective action on **water security** across the uMhlathuze region
2. **Collaborate** with all key stakeholders and water users in the region
3. Implement **short and medium-term measures** to improve water security for industry, agriculture and communities
4. Use water as a focal point **for transformation and economic development** to strengthen resilience and adaptive capacity
5. Work with public sector institutions to support improved **service delivery** and **natural resource management**

UWASP has five work areas, as agreed by the partners:



1

Enhanced coastal lakes management & dam mentorship programme

Lead: NBI
Support: GIZ-NatuRes

2

Downstream water-use efficiency & water losses

Lead: GIZ-NatuRes
Support: NBI

3

Agricultural water stewardship & efficiency

Lead: WWF-Mondi
Support: Tongaat Hulett

4

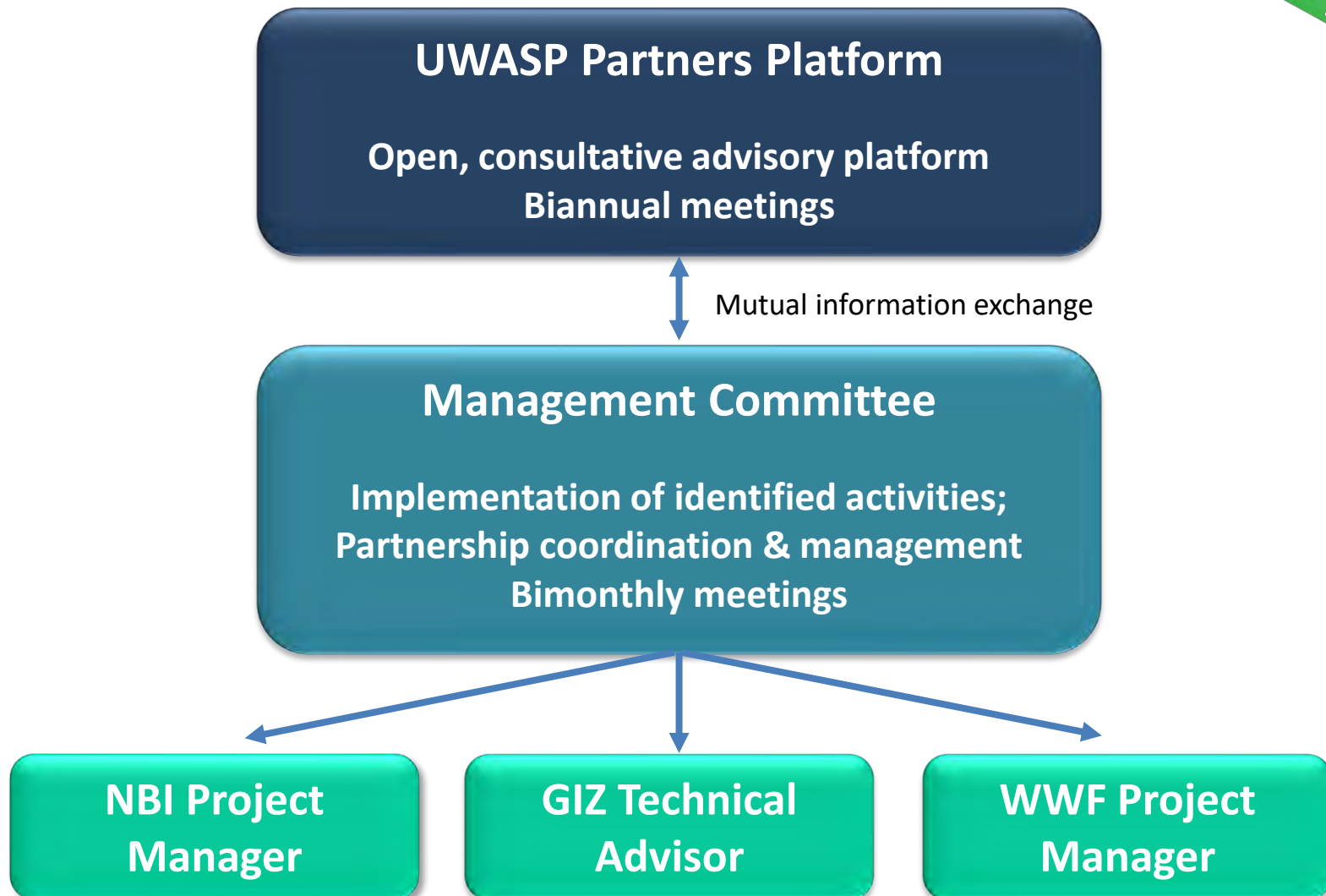
Ecological infrastructure: invasive clearing and wetlands

Lead: WWF-Mondi
Support: uMhlathuze Irrigators Forum

5

Cross-cutting: develop local community environmental champions

UWASP has an established governance structure that supports your participation





Examples of our recent work in the catchment



- [illegible]

Collaborative monitoring and management of dam water releases



- **Harness knowledge and expertise of experienced dam manager (Norman Ward):** embed within catchment
- **Simplify the dam release tool** to encourage more widespread use amongst stakeholders and improve collective decision making support
- **Digitise the tool** to enable more effective collaboration and use
- **Present the tool to DWS national dam operators**



www.uwasp.pisilabs.com



Citizen and youth-based water and waste management



- **An integrated schools programme** that builds on and connects the best of existing schools' initiatives in South Africa
- **A water efficiency programme within partners' properties** (e.g. water audits and responsive actions within schools, universities, government buildings and companies)
- **A socio-technical water/ catchment management programme beyond partners' properties** (e.g. using innovations such as communities and youth support by cell phone applications to report on and address water/ catchment issues)



CITY OF
UMHLATHUZE
VISION INTO ACTION



creating
SUSTAINABLE
value

 **NatuReS**
NATURAL RESOURCES STEWARDSHIP PROGRAMME
Joint solutions for resilient economic growth


german
cooperation
DEUTSCHE ZUSAMMENARBEIT

 giz
Business Development
and Project Support
giz.com

Business and natural resource management training for small-scale farmers



- **Business development** to equip farmers with optimal production parameters
- **Natural resources management** and approaches to more efficient farming
- **Water re-use and management** in the agricultural sector
- **Gender:** women in farming

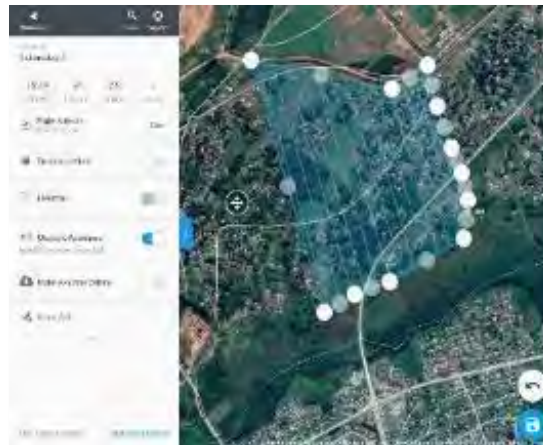


Convening, learning and coordination



Aim: Informed decision making by authorities through partnership, mentoring, planning, research & monitoring

- **Catchment Management Forum**
- **Non revenue water reduction support**
- **Climate change strategies & action plans**
- **Multi-stakeholder Alien Invasive Plant (AIP) Strategy**
- **Catchment monitoring & dam releases support**
- **DWS Learning Academy Graduate Mentoring Support**



Industry water stewardship



Mondi



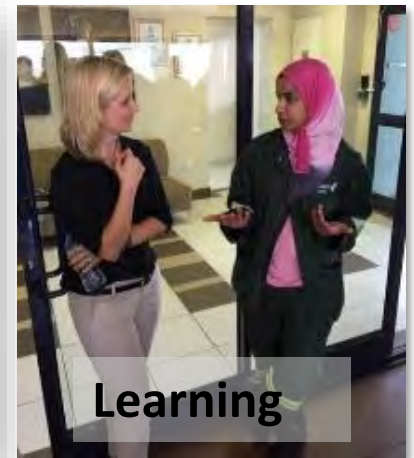
Aim: Introducing and guiding Richards Bay industry on their water stewardship journey

- **Industry water stewardship training, August 2018**
- **Industry water stewardship training, October 2019**

**Tongaat Hulett
Sugar**



**Eg. Mulching of
citrus and nut trees
using waste fibre.**



Learning

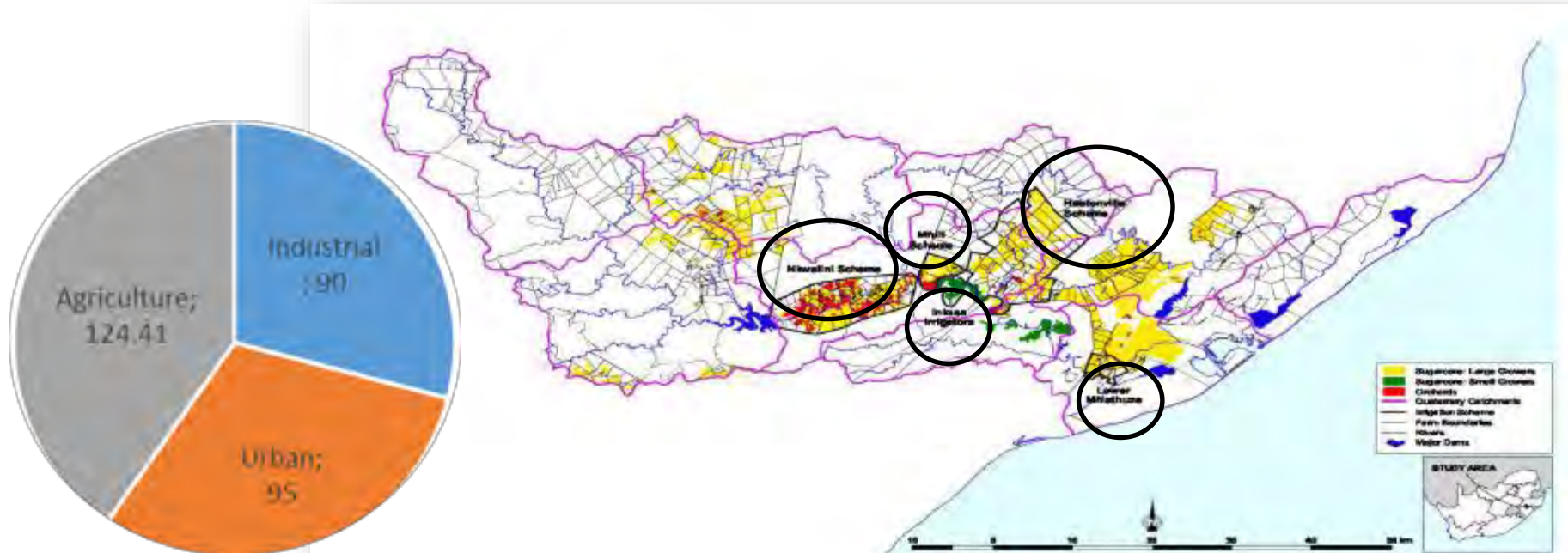


**Some of our priority initiatives
for the year ahead:**

Strategic Water Governance: No. 1 - Development of Single Water Users Association



Aim: Strengthen irrigation governance through an improved management structure



Objective: Merge five existing irrigation systems into one Water Users Association

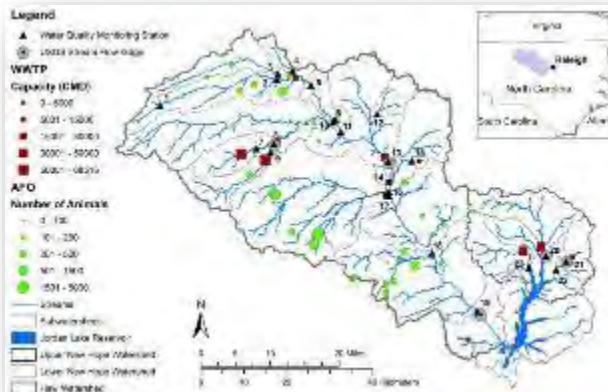
Strategic Water Governance: No. 2 - Metering



Aim: Understand daily and seasonal water use by irrigators in the catchment

Objective: Install reliable, accurate meters and telemetry at all necessary abstraction points. To be managed by the WUA

Strategic Water Governance: No. 3 - Catchment Water Balance



Aim: Develop an online water balance tool/ dashboard with data from resources and users, to assist authorities in making informed strategic decisions on water management

Objective: Convene and motivate key role players to contribute to the online balance

Thank you!



NBI Project Manager

Mmaphefo Thwala

MmaphefoT@nbi.org.za

Cell: 061 242 1385

GIZ-NatuRes Country Coordinator

Dr Faith Lawrence

faith.lawrence@giz.de

Cell: 082 929 5199

Manager: WWF-Mondi Water Stewardship Partnership

David Lindley

dlindley@wwf.org.za

Cell: 083 222 9155

UWASP

uMhlathuze Water Stewardship Partnership

