

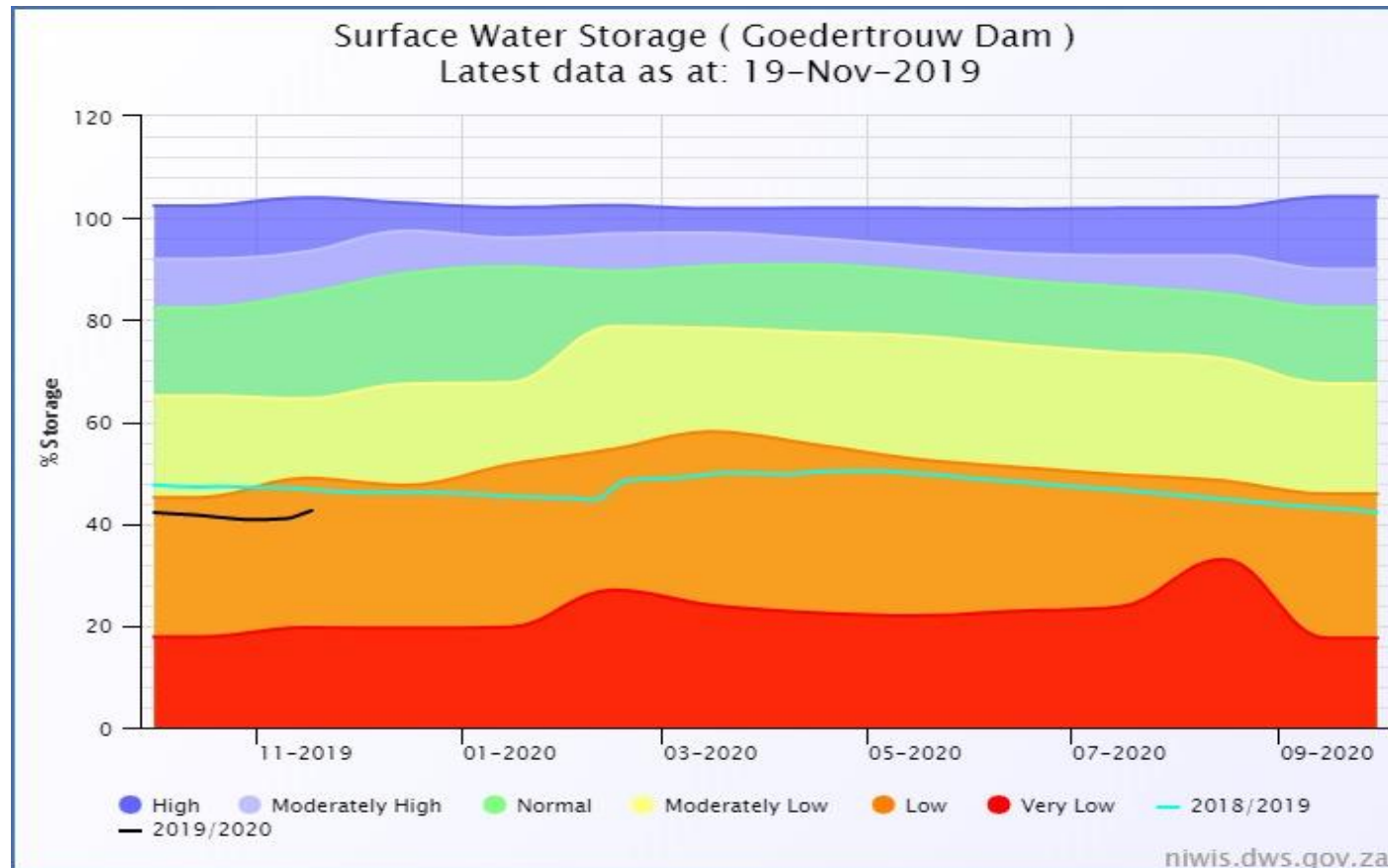


uWASP uMhlathuze Catchment Update

Candice Webb
November 2019

Goedertrouw Dam Level

- Existing Tugela Transfer Pipeline has not been in operation for over a year.
- Second Tugela Transfer Pipeline construction phase has been stopped due to contractor issues.
- Water consumption trends across the catchment have increased.
- Higher than average temperatures and lower than average rainfall predicted over next 3 months.



uWASP Projects – 2019

- Supporting Agriculture
 - Billing on water use vs allocation
 - Single Water Users Association
- Ecological infrastructure
 - Catchment wide Alien Plant Management Plan
 - Tronox water hyacinth control project – biological control release
- Catchment Management Forum
- Mondi mulching project

Agriculture m³/a in uMhlatuze Catchment:

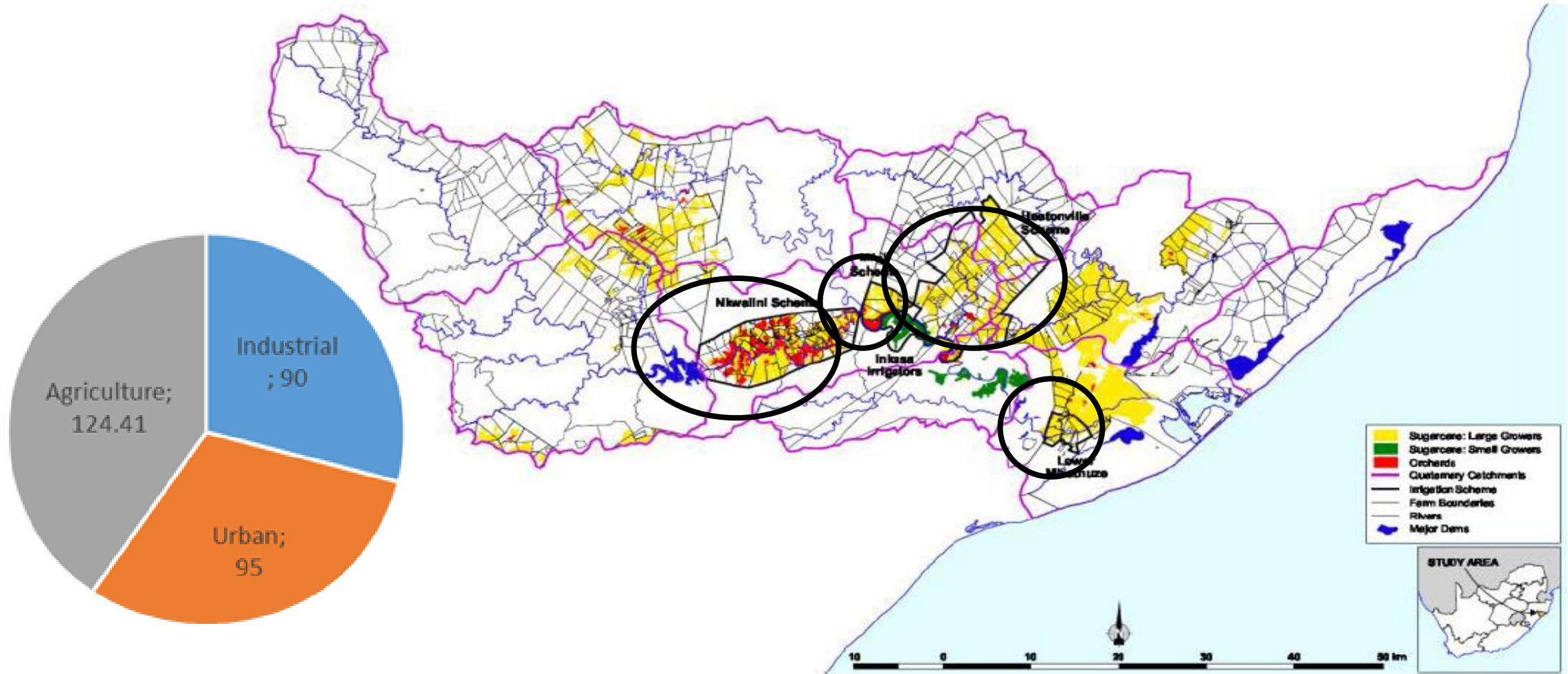


FIGURE 26: EXTENT OF AGRICULTURE ACROSS THE MHLATHUZE CATCHMENT (DWAf, 2009)



Thank you!