

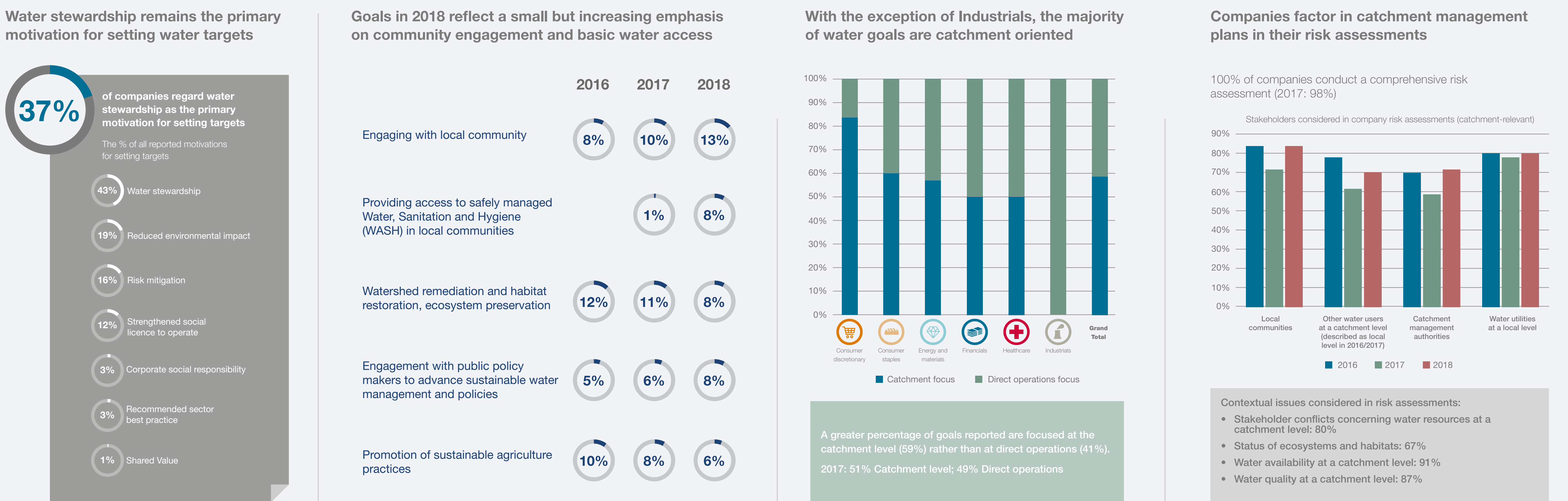
# COMPANY ACTION



## DESPITE A WORSENING RISK ENVIRONMENT, COMPANIES IDENTIFY SUBSTANTIVE AND IMMEDIATE OPPORTUNITIES IN WATER

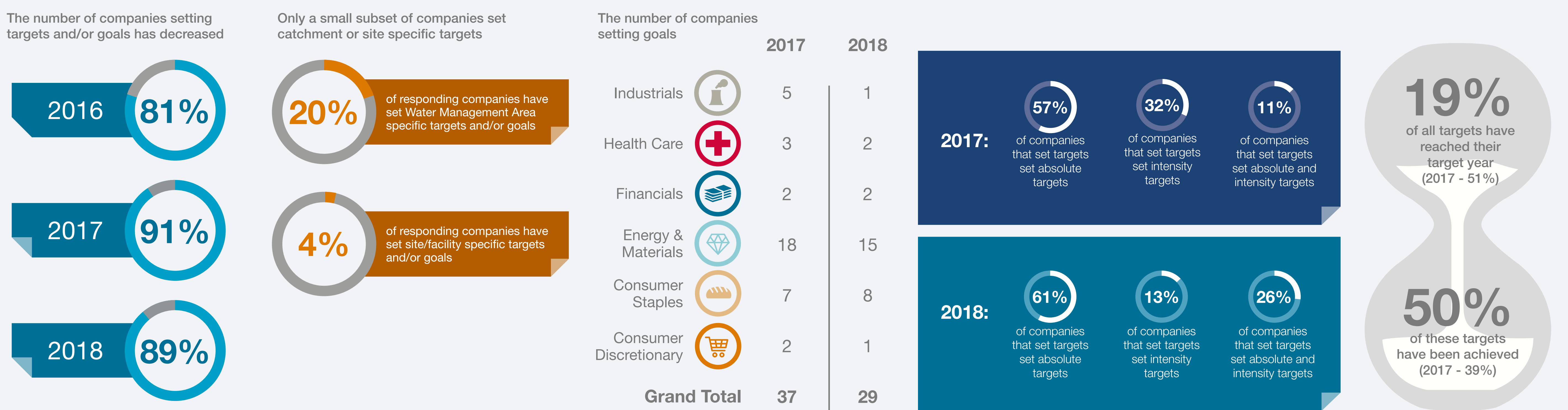


## COMPANIES ARE STARTING TO CONSIDER THEIR SURROUNDING COMMUNITIES AND CATCHMENT CONTEXT



## GIVEN THAT THE FINANCIAL COSTS AND THE LIKELIHOOD AND IMPACT OF WATER RISK HAVE INCREASED, A MORE ROBUST RESPONSE TO WATER RISKS IS NEEDED

### COMPANY TARGET AND GOAL SETTING IS NOT SUFFICIENT



## COMPANIES ALSO NEED TO STRENGTHEN THEIR EFFORTS IN WATER STRESSED AREAS AND WITHIN THEIR VALUE CHAINS

