

# YOUTH UNEMPLOYMENT IN SOUTH AFRICA

Persistent and increasingly high levels of youth unemployment in South Africa presents one of the most significant obstacles to achieving equitable and inclusive economic growth. However, there are sectors and job families that have the potential to absorb many of these youth.

**JOBS**



The potential for employment creation is restricted by two factors:

- 1 Informal SMEs dominate many growth sectors in our country and yet - because they face significant barriers to market access and growth - they do not create jobs.
- 2 The pathways for vocational learning are restrictive and limit the availability of an effective skills pool.



The demand for artisanal skills manifests where there is increasing demand for



**Installation**

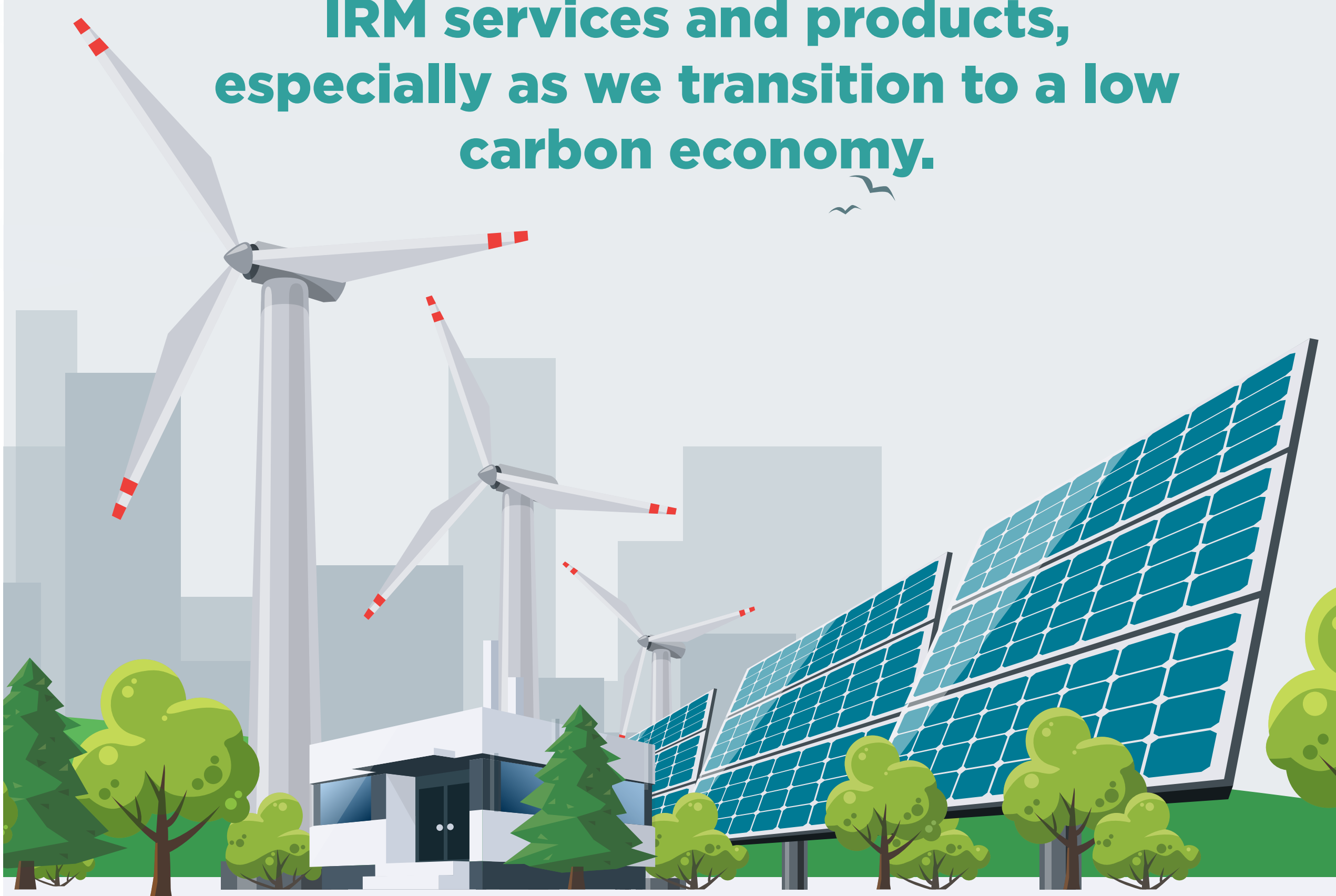


**Repair**



**Maintenance**

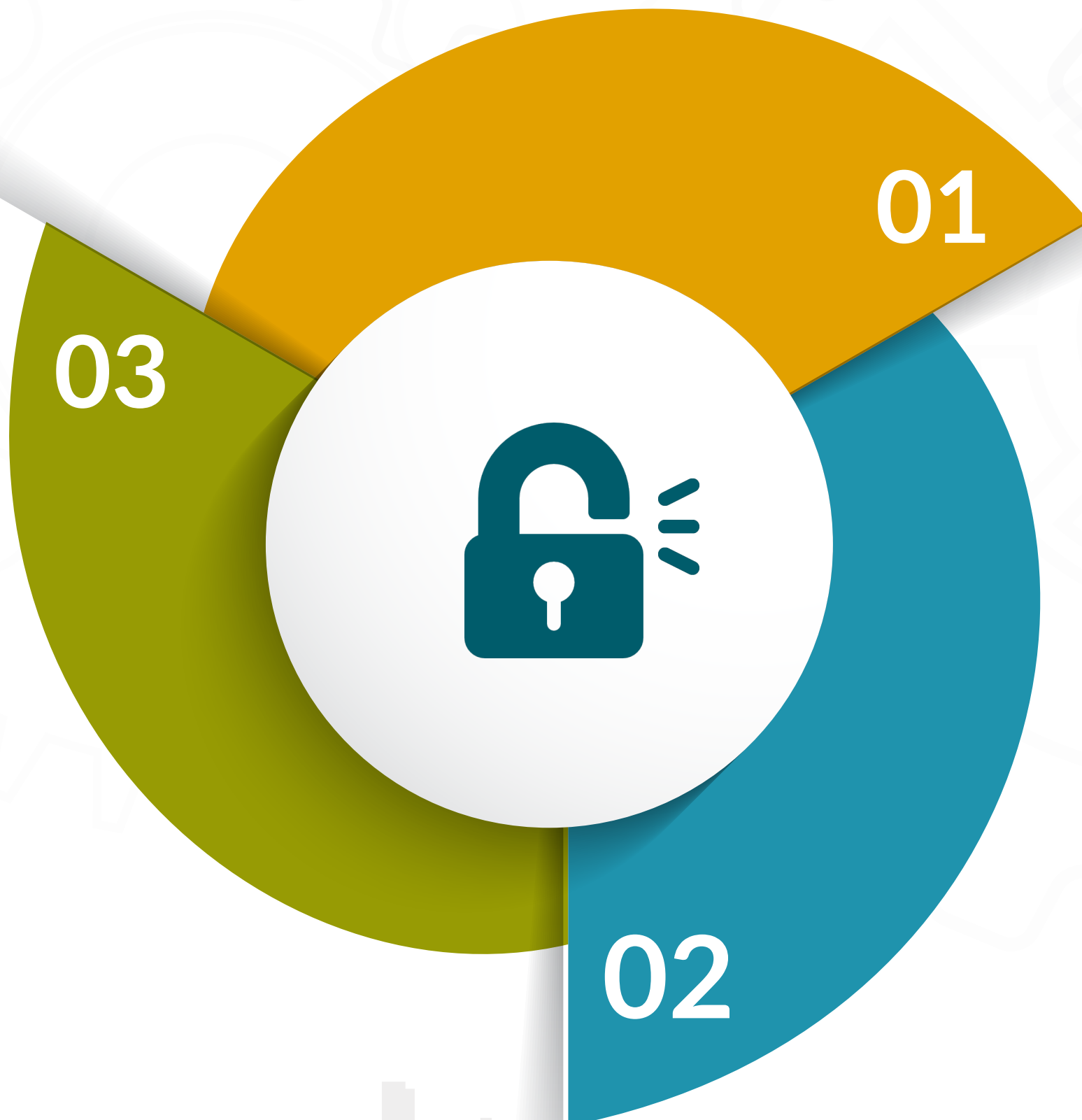
IRM services and products, especially as we transition to a low carbon economy.



The IRM Initiative adopts an ecosystem development approach to unlocking the demand for IRM skills and jobs:

**Build and strengthen the Entrepreneurial Ecosystem to support the success of growth-oriented IRM entrepreneurs.**

**Strengthen the capacity of the TVET system to deliver skills training that is aligned to demands of SMEs.**



**Increase the number of growth-oriented IRM entrepreneurs that can create jobs.**





# Strategic Focus

The IRM works off three strategic pillars

01

## INFRASTRUCTURE DEVELOPMENT

Linking township contractors to public and private sector construction and maintenance supply and value chains.



02

## GREEN ECONOMY

Leveraging off demand for resource efficient construction and maintenance practices.



03

## LOCALISATION AND REINDUSTRIALISATION

Alignment to sectoral and local industrial development nodes.



### THE PROGRAMME TARGETS A RANGE OF INDUSTRIES WITHIN THE INFRASTRUCTURE SECTOR

Property Maintenance  
(General Repairer)

Plumbing

Automotive

Construction

Manufacturing

Electronics

Solar PV

Electrical



### THE NBI HAS IDENTIFIED THE FOLLOWING SOURCES OF DEMAND IN THE INFRASTRUCTURE SECTOR



Construction Industry



Renovation & Maintenance of Public Infrastructure



Strategic Industrial Investments



Private Commercial Property



Insurance Industry







## GROWING THE ENTREPRENEURIAL ECOSYSTEM IN THE TOWNSHIP ECONOMY



Entrepreneurs need an enabling environment within which they can innovate, prosper and grow their enterprises.

The entrepreneurial ecosystem is a community where there is dynamic interaction between different actors to enable entrepreneurs to succeed.

The IRM Initiative collaborates with key actors in local areas to build effective entrepreneurial ecosystems that:

- Unlock market opportunities for local IRM entrepreneurs
- Coordinate entrepreneurial networks and support services.
- Unlock accessible enterprise finance and investment
- Address regulatory and infrastructural barriers that restrict entrepreneurial activity.



**THE IRM INITIATIVE SEEKS TO LOCATE PUBLIC TVET COLLEGES AT THE HEART OF THE ENTREPRENEURIAL ECOSYSTEM WITHIN THE TOWNSHIP ECONOMY.**



The initiative will establish IRM hubs at various TVET College campuses.

The hubs will link TVET Colleges to the broader entrepreneurial ecosystem

**The role of the hubs is to:**  
Identify growth-oriented IRM entrepreneurs in surrounding communities and assist them to accelerate growth in their business

Identify potential entrepreneurs in the pool of IRM trainees and assist them to incubate new businesses.

Match young people that have been trained in IRM skills to the enterprises and assist in placing them for workplace training and/or employment.

## IRM TOWNSHIP HUB SHARED WORKSPACE AND SERVICES

**IRM Township Hubs comprise the following:**



**Shared workspace**



**Digital platform**



**A maker space and "factory" for design**

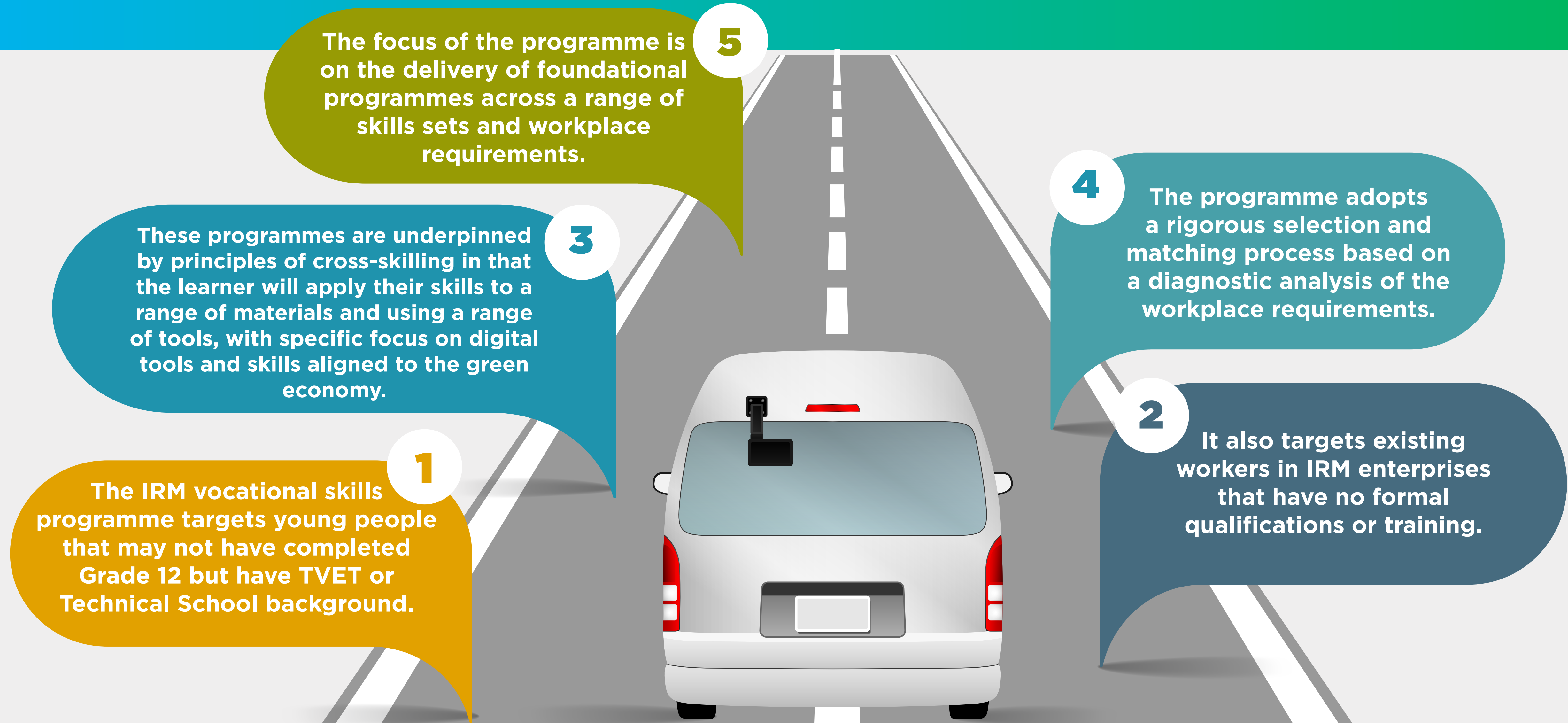


**Training space**





PREPARING THE TALENT POOL FOR SMES THAT ARE ON A GROWTH PATH



IRM DUAL TRAINING MODEL FOR UNEMPLOYED YOUTH



THE IRM INITIATIVE SEEKS TO CREATE 1-2 JOBS IN EVERY GROWTH-ORIENTED TOWNSHIP BASED IRM SME WITHIN THE FIRST 18 MONTHS.

